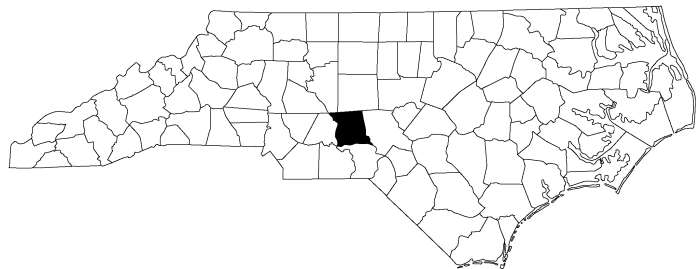


**CONTRACT: TIP PROJECT: BO-2408F**

STATE OF NORTH CAROLINA  
DIVISION OF HIGHWAYS



***DIVISIONWIDE***

**LOCATION: MONTGOMERY COUNTY**

**TYPE OF WORK: CURB RAMP INSTALLATIONS**



STATE	STATE PROJECT REFERENCE NO.	SHEET NO.	TOTAL SHEETS
N.C.	BO-2408F	1	16
STATE PROJ. NO.	F.A. PROJ. NO.	DESCRIPTION	
50937.1.2	5093701	PE	
50937.3.8	5093708	CON	

Prepared In the Office of:  
**DIVISION OF HIGHWAYS**  
1000 Birch Ridge Dr., Raleigh NC, 27610

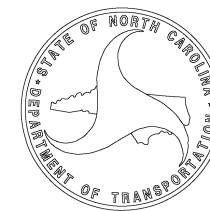
2024 STANDARD SPECIFICATIONS

RIGHT OF WAY DATE:  
N/A

LETTING DATE:  
June 10, 2025

**MICHAEL RICKETTS**  
PROJECT ENGINEER

**NV5**  
PROJECT DESIGN ENGINEER



ADA SUMMARY OF QUANTITIES - TOTALS

TIP Number:	BO-2408F
PE WBS Number:	50937.1.2
Con WBS Number:	50937.3.8
County:	Montgomery

Sheet No.
2

TIP Number	County	Municipality	0000100000-N (LS) Mobilization	4457000000-N (LS) Temporary Traffic Control	0156000000-E (SY) Removal of Existing Asphalt Pavement	2549000000-E (LF) 2'-6" Concrete Curb & Gutter	2752000000-E (LF) Remove And Replace 2'-6" Concrete Curb & Gutter	2752000000-E (LF) Remove 2'-6" Concrete Curb & Gutter	2591000000-E (SY) 4" Concrete Sidewalk	2738000000-E (SY) Remove And Replace 4" Concrete Sidewalk	2738000000-E (SY) Remove 4" Concrete Sidewalk	2738000000-E (SY) Remove and Reset Brick Pavers	2845000000-N (EA) Adjustment of Meter Boxes or Valve Boxes	4116100000-N (EA) Sign Erection, Relocate Type E (Ground Mounted)	2738000000-E (SY) Remove Driveway Apron	2612300000-N (EA) Retrofit Existing Concrete Curb Ramps	2612500000-N (EA) Remove and Replace Concrete Curb Ramps	2605000000-N (EA) Concrete Curb Ramps	2759000000-N (EA) Remove Concrete Curb Ramps
BO-2408F	Montgomery	Biscoe			11	551	222	87	104	150	55	3	2	4	0	2	74	5	20
BO-2408F	Montgomery	Star			9	21	80	65	0	42	22	0	0	0	4	3	6	1	1
BO-2408F	Montgomery	Unincorporated Areas			0	60	17	0	0	3	0	0	0	0	0	0	4	0	4
-	-	-	1	1	-	-	-	-	-	-	-	-	-	-	-	-	-	-	-
<b>Total</b>			<b>1</b>	<b>1</b>	<b>20</b>	<b>632</b>	<b>319</b>	<b>152</b>	<b>104</b>	<b>195</b>	<b>77</b>	<b>3</b>	<b>2</b>	<b>4</b>	<b>4</b>	<b>5</b>	<b>84</b>	<b>6</b>	<b>25</b>

ADA SUMMARY OF QUANTITIES - BISCOE

Municipality:	Biscoe
Project Number:	BO-2408F
PE WBS Number:	50937.1.2
Con WBS Number:	50937.3.8
County:	Montgomery

Sheet No.
3

Ramp ID	Inset Map Number	Route 1	Route 2	0156000000-E (SY) Removal of Existing Asphalt Pavement	2549000000-E (LF) 2'-6" Concrete Curb & Gutter	2752000000-E (LF) Remove And Replace 2'-6" Concrete Curb & Gutter	2752000000-E (LF) Remove 2'-6" Concrete Curb & Gutter	2591000000-E (SY) 4" Concrete Sidewalk	2738000000-E (SY) Remove And Replace 4" Concrete Sidewalk	2738000000-E (SY) Remove 4" Concrete Sidewalk	2738000000-E (SY) Remove and Reset Brick Pavers	2845000000-N (EA) Adjustment of Meter Boxes or Valve Boxes	4116100000-N (EA) Sign Erection, Relocate Type E (Ground Mounted)	2738000000-E (SY) Remove Driveway Apron	2612300000-N (EA) Retrofit Existing Concrete Curb Ramps	2612500000-N (EA) Remove and Replace Concrete Curb Ramps	2605000000-N (EA) Concrete Curb Ramps	2759000000-N (EA) Remove Concrete Curb Ramps	Improvement Type
920	1	NC-24	Montgomery Crossing													1			Type 2B - 848.06
743	2	NC-24	SR-1556 (Sedberry Rd)													1			Type 2B - 848.06
744	2	NC-24	SR-1556 (Sedberry Rd)													1			Type 2B - 848.06
745	3	NC-24	O'Reilly Auto Parts (113 Sedberry Rd) NC-24 Entrance		8											1			Type 1C - 848.06
746	3	NC-24	O'Reilly Auto Parts (113 Sedberry Rd) NC-24 Entrance		8											1			Type 1C - 848.06
749	4	NC-24	Car Wash (2398 NC-24)		6											1			Type 1C - 848.06
750	4	NC-24	Car Wash (2398 NC-24)		6											1			Type 1C - 848.06
751	5	NC-24	Main Street Beauty Supply & Salon (2384 NC-24)		7											1			Type 1C - 848.06
752	5	NC-24	Main Street Beauty Supply & Salon (2384 NC-24)		4											1			Type 1C - 848.06
1161	6	NC-24	Craven St					6								1			Type 1 Modified - 848.06
1162	6	NC-24	Craven St					6								1			Type 1 Modified - 848.06
753	7	NC-24 (West Main St)	DaVita Dialysis Care of Montgomery County (323 W Main St)													1			Type 1C - 848.06
754	7	NC-24 (West Main St)	DaVita Dialysis Care of Montgomery County (323 W Main St)													1			Type 1C - 848.06
737	8	SR-1337 (Lambert Rd)	Green St					6								1			Type 1C - 848.06
738	8	SR-1337 (Lambert Rd)	Green St					6								1			Type 1C - 848.06
739	9	SR-1337 (Lambert Rd)	Christian Life Ministries (204 Lambert Rd) North Entrance				15			9							1		Type 2B - 848.06
740	9	SR-1337 (Lambert Rd)	Christian Life Ministries (204 Lambert Rd) North Entrance						6							1			Type 2B - 848.06
741	10	SR-1337 (Lambert Rd)	Christian Life Ministries (204 Lambert Rd) South Entrance						6							1			Type 2B - 848.06
742	10	SR-1337 (Lambert Rd)	Christian Life Ministries (204 Lambert Rd) South Entrance		10		10		12							1			Type 2B - 848.06
755	11	NC-24 (West Main St)	SR-1337 (Lambert Rd)													1			Type 2B - 848.06
756	11	NC-24 (West Main St)	SR-1337 (Lambert Rd)													1			Type 1A - 848.06
757	12	NC-24 (West Main St)	Brooks St													1			Type 1C - 848.06
758	12	NC-24 (West Main St)	Brooks St						3							1			Type 1C - 848.06
1055	13	NC-24 (West Main St)	Biscoe Police Department (114 W Main St)				6		3							1			Type 1A - 848.06
1056	13	NC-24 (West Main St)	Biscoe Police Department (114 W Main St)				6		3							1			Type 1A - 848.06
1057	14	NC-24 (West Main St)	Gas Station (103 W Main St)						3							1			Type 1 Modified - 848.06
<b>Sub-Total</b>				<b>0</b>	<b>49</b>	<b>0</b>	<b>37</b>	<b>12</b>	<b>48</b>	<b>9</b>	<b>0</b>	<b>0</b>	<b>0</b>	<b>0</b>	<b>0</b>	<b>25</b>	<b>1</b>	<b>0</b>	

Notes: (1) ADA quantity totals are provided on the project 'ADA SUMMARY OF QUANTITIES - TOTALS' page. (2) \*Contingency line item amount provided for adjustments outside of curb ramp pay limits.

ADA SUMMARY OF QUANTITIES - BISCOE

Municipality:	Biscoe
Project Number:	BO-2408F
PE WBS Number:	50937.1.2
Con WBS Number:	50937.3.8
County:	Montgomery

Sheet No.
4

Ramp ID	Inset Map Number	Route 1	Route 2	0156000000-E (SY) Removal of Existing Asphalt Pavement	2549000000-E (LF) 2'-6" Concrete Curb & Gutter	2752000000-E (LF) Remove And Replace 2'-6" Concrete Curb & Gutter	2752000000-E (LF) Remove 2'-6" Concrete Curb & Gutter	2591000000-E (SY) 4" Concrete Sidewalk	2738000000-E (SY) Remove And Replace 4" Concrete Sidewalk	2738000000-E (SY) Remove 4" Concrete Sidewalk	2738000000-E (SY) Remove and Reset Brick Pavers	2845000000-N (EA) Adjustment of Meter Boxes or Valve Boxes	4116100000-N (EA) Sign Erection, Relocate Type E (Ground Mounted)	2738000000-E (SY) Remove Driveway Apron	2612300000-N (EA) Retrofit Existing Concrete Curb Ramps	2612500000-N (EA) Remove and Replace Concrete Curb Ramps	2605000000-N (EA) Concrete Curb Ramps	2759000000-N (EA) Remove Concrete Curb Ramps	Improvement Type
1058	14	NC-24 (West Main St)	Gas Station (103 W Main St)						6							1			Type 1 Modified - 848.06
1059	15	NC-24 (West Main St)	SR-1339 (Page St)													1			Type 1A - 848.06
1060	15	NC-24 (West Main St)	SR-1339 (Page St)						6							1			Type 1A - 848.06
760	16	NC-24 (East Main St)	US-220 ALT (North Main St)					10								1			Standard - 848.06
761	16	NC-24 (East Main St)	US-220 ALT (South Main St)						9							1			Standard - 848.06
762	16	NC-24 (East Main St)	US-220 ALT (South Main St)					2	6							1			Standard - 848.06
763	16	US-220 ALT (South Main St)	NC-24 (West Main St)					6								1			Type 2B - 848.06
764	16	US-220 ALT (South Main St)	NC-24 (West Main St)													1			Type 2B - 848.06
765	16	US-220 ALT (North Main St)	NC-24 (West Main St)													1			Type 2B - 848.06
766	16	US-220 ALT (North Main St)	NC-24 (West Main St)													1			Type 2B - 848.06
1046	17	US-220 ALT (North Main St)	Manse St					5					2			1			Type 1 Modified - 848.06
1047	17	US-220 ALT (North Main St)	Manse St					5								1			Type 1 Modified - 848.06
767	18	NC-24 (East Main St)	Oak St													1			Type 1C - 848.06
769	19	NC-24 (East Main St)	S Pine St		16					4							1		Remove Ramp
770	19	NC-24 (East Main St)	S Pine St		14											1			Type 1C - 848.06
771	19	NC-24 (East Main St)	S Pine St		8				6							1			Type 1C - 848.06
772	19	NC-24 (East Main St)	S Pine St		14												1		Remove Ramp
773	19	NC-24 (East Main St)	S Pine St		12												1		Remove Ramp
774	19	NC-24 (East Main St)	S Pine St		15				3			1				1			Type 1C - 848.06
775	19	NC-24 (East Main St)	S Pine St		15											1			Type 1D - 848.06
776	19	NC-24 (East Main St)	S Pine St		15			9									1		Remove Ramp
777	20	NC-24 (East Main St)	Maple St		15			9									1		Remove Ramp
778	20	NC-24 (East Main St)	Maple St		4				6							1			Type 1C - 848.06
779	20	NC-24 (East Main St)	Maple St		15												1		Remove Ramp
780	20	NC-24 (East Main St)	Maple St		11												1		Remove Ramp
781	20	NC-24 (East Main St)	Maple St		8				3							1			Type 1C - 848.06
782	20	NC-24 (East Main St)	Maple St		15			9									1		Remove Ramp
783	21	NC-24 (East Main St)	Brendana Dr		17					3							1		Remove Ramp
784	21	NC-24 (East Main St)	Brendana Dr		13					3						1			Type 1C - 848.06
785	21	NC-24 (East Main St)	Brendana Dr		15			10									1		Remove Ramp
786	21	NC-24 (East Main St)	Brendana Dr		15			9									1		Remove Ramp
787	21	NC-24 (East Main St)	Brendana Dr		14											1			Type 1C - 848.06
<b>Sub-Total</b>				<b>0</b>	<b>251</b>	<b>0</b>	<b>0</b>	<b>74</b>	<b>45</b>	<b>10</b>	<b>0</b>	<b>1</b>	<b>2</b>	<b>0</b>	<b>0</b>	<b>21</b>	<b>0</b>	<b>11</b>	

Notes: (1) ADA quantity totals are provided on the project 'ADA SUMMARY OF QUANTITIES - TOTALS' page. (2) \*Contingency line item amount provided for adjustments outside of curb ramp pay limits.

ADA SUMMARY OF QUANTITIES - BISCOE

Municipality:	Biscoe
Project Number:	BO-2408F
PE WBS Number:	50937.1.2
Con WBS Number:	50937.3.8
County:	Montgomery

Sheet No.
5

Ramp ID	Inset Map Number	Route 1	Route 2	0156000000-E (SY) Removal of Existing Asphalt Pavement	2549000000-E (LF) 2'-6" Concrete Curb & Gutter	2752000000-E (LF) Remove And Replace 2'-6" Concrete Curb & Gutter	2752000000-E (LF) Remove 2'-6" Concrete Curb & Gutter	2591000000-E (SY) 4" Concrete Sidewalk	2738000000-E (SY) Remove And Replace 4" Concrete Sidewalk	2738000000-E (SY) Remove 4" Concrete Sidewalk	2738000000-E (SY) Remove and Reset Brick Pavers	2845000000-N (EA) Adjustment of Meter Boxes or Valve Boxes	4116100000-N (EA) Sign Erection, Relocate Type E (Ground Mounted)	2738000000-E (SY) Remove Driveway Apron	2612300000-N (EA) Retrofit Existing Concrete Curb Ramps	2612500000-N (EA) Remove and Replace Concrete Curb Ramps	2605000000-N (EA) Concrete Curb Ramps	2759000000-N (EA) Remove Concrete Curb Ramps	Improvement Type
788	21	NC-24 (East Main St)	Brendana Dr		16					3								1	Remove Ramp
789	22	NC-24 (East Main St)	Cedar St		16			9										1	Remove Ramp
790	22	NC-24 (East Main St)	Cedar St		13				3	3						1			Type 1C - 848.06
791	22	NC-24 (East Main St)	Cedar St		18													1	Remove Ramp
792	22	NC-24 (East Main St)	Cedar St		16				3									1	Remove Ramp
793	22	NC-24 (East Main St)	Cedar St		3				6							1			Type 1C - 848.06
794	22	NC-24 (East Main St)	Cedar St		16			9										1	Remove Ramp
1061	23	NC-24 (East Main St)	ABC Store (509 E Main St)		7											1			Type 1 Modified - 848.06
1062	23	NC-24 (East Main St)	ABC Store (509 E Main St)		12											1			Type 1 Modified - 848.06
1063	24	NC-24 (East Main St)	ABC Store (509 E Main St)		12				3							1			Type 1 Modified - 848.06
1064	24	NC-24 (East Main St)	Gas Station (511 E Main St)		12											1			Type 1 Modified - 848.06
1065	24	NC-24 (East Main St)	Gas Station (511 E Main St)		12				3							1			Type 1 Modified - 848.06
1066	24	NC-24 (East Main St)	Gas Station (511 E Main St)		8											1			Type 1 Modified - 848.06
795	25	NC-24 (East Main St)	SR-1577 (Mccaskill St)													1			Type 2B - 848.06
796	25	NC-24 (East Main St)	SR-1577 (Mccaskill St)													1			Type 2B - 848.06
797	25	NC-24 (East Main St)	SR-1577 (Mccaskill St)								3					1			Type 2B - 848.06
798	25	NC-24 (East Main St)	SR-1577 (Mccaskill St)									1				1			Type 2B - 848.06
799	25	NC-24 (East Main St)	SR-1577 (Mccaskill St)						6							1			Type 2B - 848.06
800	25	NC-24 (East Main St)	SR-1577 (Mccaskill St)		10				6							1			Type 3 Modified - 848D0609
801	25	NC-24 (East Main St)	SR-1577 (Mccaskill St)						6							1			Standard - 848.06
802	25	NC-24 (East Main St)	SR-1577 (Mccaskill St)													1			Standard - 848.06
1334	26	SR-1577 (Mccaskill St)	Forest Dr													1			Type 1A - 848.06
803	27	NC-24 (East Main St)	Hardee's (519 E Main St)		15													1	Remove Ramp
804	27	NC-24 (East Main St)	Grede (520 E Main St) Receiving Entrance		15													1	Remove Ramp
805	27	NC-24 (East Main St)	Grede (520 E Main St) Receiving Entrance		15													1	Remove Ramp
806	27	NC-24 (East Main St)	Hardee's (519 E Main St)		15													1	Remove Ramp
1330	28	SR-1577 (Mccaskill St)	Grede Employee Parking North Crossing													1			Type 1 Modified - 848.06
1331	28	SR-1577 (Mccaskill St)	Grede Employee Parking North Crossing		3											1			Type 1 Modified - 848.06
1332	29	SR-1577 (Mccaskill St)	Grede Employee Parking South Crossing												1				Retrofit Warnings - 848.06
1333	29	SR-1577 (Mccaskill St)	Grede Employee Parking South Crossing												1				Retrofit Warnings - 848.06
1158	30	US-220 ALT (South Main St)	Church St		2				3							1			Type 1 Modified - 848.06
1159	30	US-220 ALT (South Main St)	Church St													1			Type 1 Modified - 848.06
<b>Sub-Total</b>				<b>5</b>	<b>231</b>	<b>0</b>	<b>0</b>	<b>18</b>	<b>39</b>	<b>6</b>	<b>3</b>	<b>1</b>	<b>0</b>	<b>0</b>	<b>2</b>	<b>21</b>	<b>0</b>	<b>9</b>	

Notes: (1) ADA quantity totals are provided on the project 'ADA SUMMARY OF QUANTITIES - TOTALS' page. (2) \*Contingency line item amount provided for adjustments outside of curb ramp pay limits.

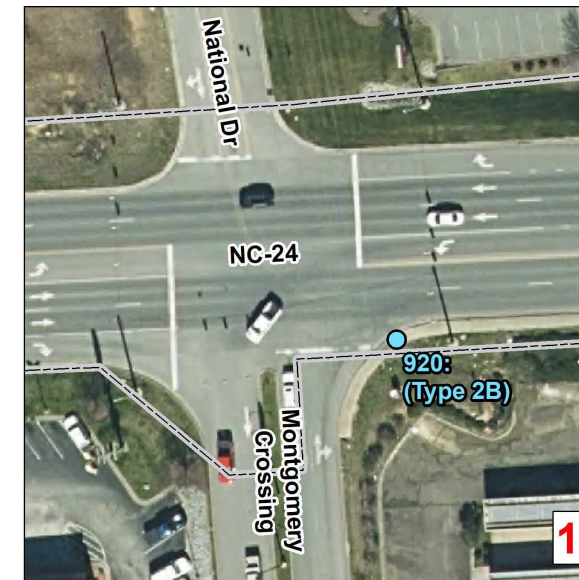
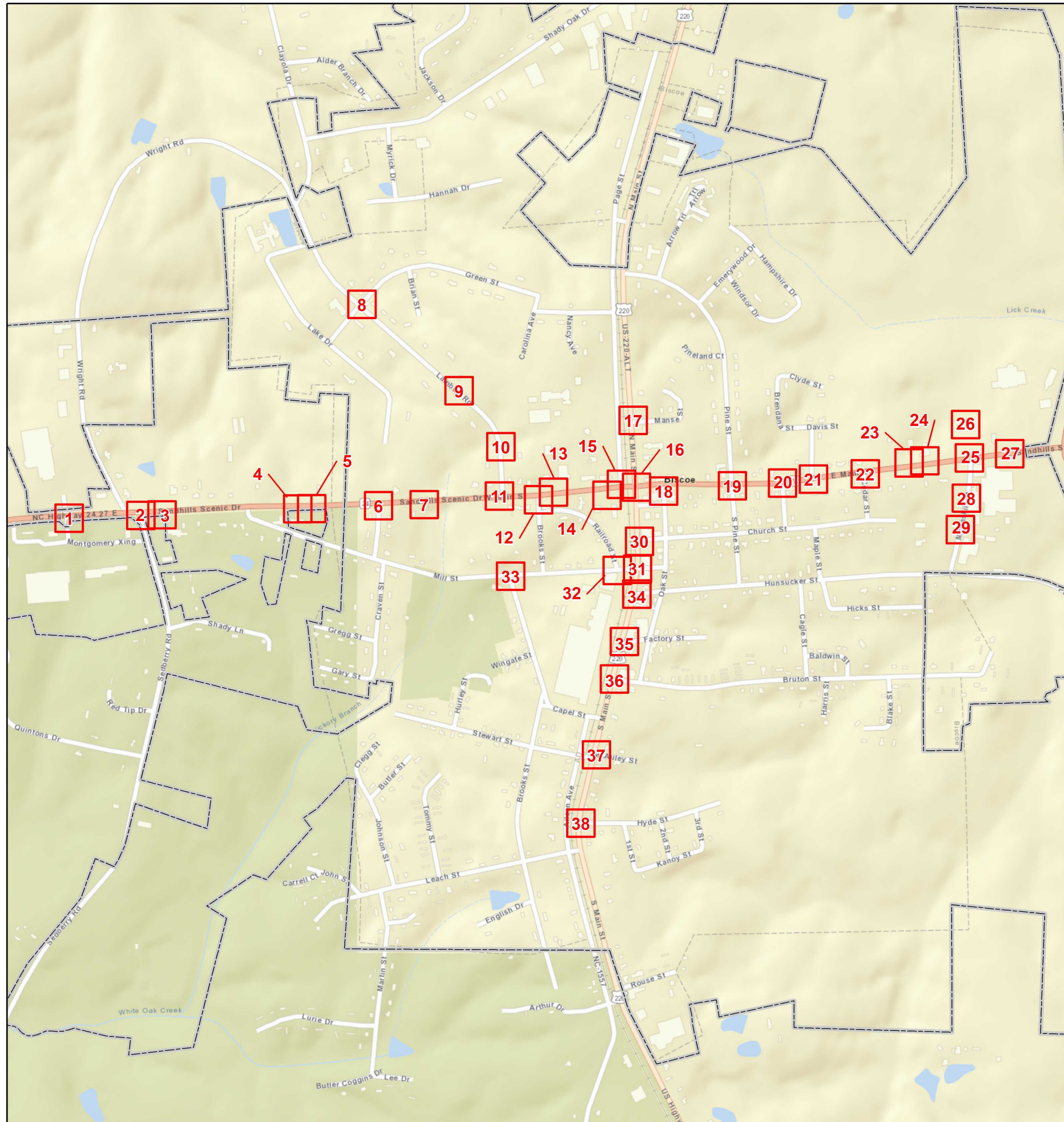
ADA SUMMARY OF QUANTITIES - BISCOE

Municipality:	Biscoe
Project Number:	BO-2408F
PE WBS Number:	50937.1.2
Con WBS Number:	50937.3.8
County:	Montgomery

Sheet No.
6

Ramp ID	Inset Map Number	Route 1	Route 2	0156000000-E (SY) Removal of Existing Asphalt Pavement	2549000000-E (LF) 2'-6" Concrete Curb & Gutter	2752000000-E (LF) Remove And Replace 2'-6" Concrete Curb & Gutter	2752000000-E (LF) Remove 2'-6" Concrete Curb & Gutter	2591000000-E (SY) 4" Concrete Sidewalk	2738000000-E (SY) Remove And Replace 4" Concrete Sidewalk	2738000000-E (SY) Remove 4" Concrete Sidewalk	2738000000-E (SY) Remove and Reset Brick Pavers	2845000000-N (EA) Adjustment of Meter Boxes or Valve Boxes	4116100000-N (EA) Sign Erection, Relocate Type E (Ground Mounted)	2738000000-E (SY) Remove Driveway Apron	2612300000-N (EA) Retrofit Existing Concrete Curb Ramps	2612500000-N (EA) Remove and Replace Concrete Curb Ramps	2605000000-N (EA) Concrete Curb Ramps	2759000000-N (EA) Remove Concrete Curb Ramps	Improvement Type
1160	31	US-220 ALT (South Main St)	Shamburger St						3							1			Type 1 Modified - 848.06
1069	32	SR-1503 (Mill St)	Railroad St	6	20											1			Type 1C - 848.06
735	33	SR-1503 (Mill St)	Brooks St				20			12			2				1		Type 2A - 848.06
736	33	SR-1503 (Mill St)	Brooks St				15			6							1		Type 1C - 848.06
1048	34	US-220 ALT (South Main St)	SR-1500 (Hunsucker St)						6							1			Type 1 Modified - 848.06
1049	34	US-220 ALT (South Main St)	SR-1500 (Hunsucker St)						9	6							1		Type 1 Modified - 848.06
1050	35	US-220 ALT (South Main St)	Factory St							6							1		Type 1C - 848.06
1051	36	US-220 ALT (South Main St)	SR-1501 (Bruton St)													1			Type 1 Modified - 848.06
1052	37	US-220 ALT (South Main St)	Mcauley St													1			Type 1 Modified - 848.06
1053	37	US-220 ALT (South Main St)	Mcauley St													1			Type 1 Modified - 848.06
1054	38	US-220 ALT (South Main St)	Hyde St													1			Type 1 Modified - 848.06
-	-	-	-	-	-	222*	-	-	-	-	-	-	-	-	-	-	-	-	
<b>Sub-Total</b>				<b>6</b>	<b>20</b>	<b>222</b>	<b>35</b>	<b>0</b>	<b>18</b>	<b>30</b>	<b>0</b>	<b>0</b>	<b>2</b>	<b>0</b>	<b>0</b>	<b>7</b>	<b>4</b>	<b>0</b>	
<b>Sub-Total for Biscoe</b>				<b>11</b>	<b>551</b>	<b>222</b>	<b>72</b>	<b>104</b>	<b>150</b>	<b>55</b>	<b>3</b>	<b>2</b>	<b>4</b>	<b>0</b>	<b>2</b>	<b>74</b>	<b>5</b>	<b>20</b>	

Notes: (1) ADA quantity totals are provided on the project 'ADA SUMMARY OF QUANTITIES - TOTALS' page. (2) \*Contingency line item amount provided for adjustments outside of curb ramp pay limits.



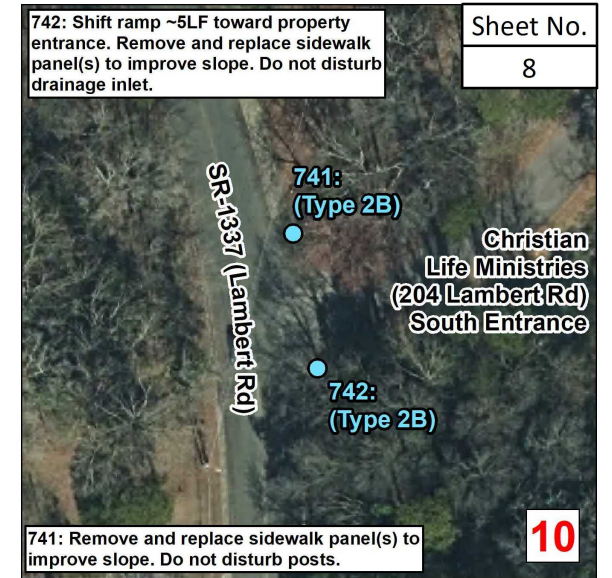
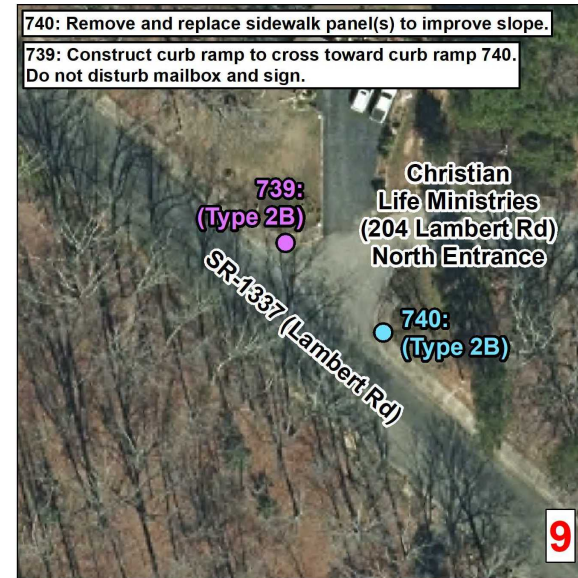
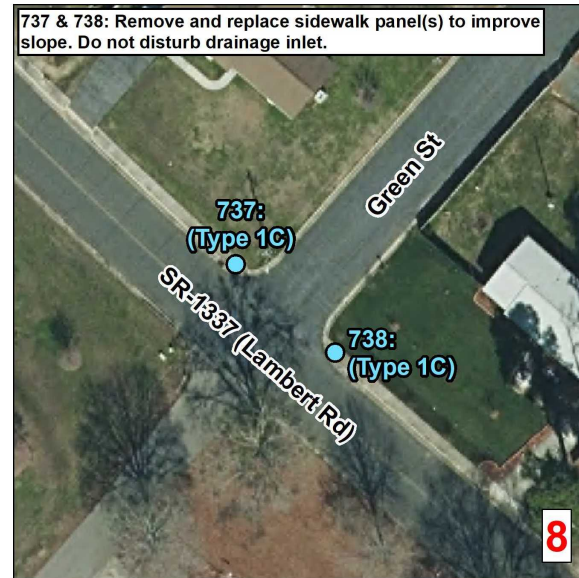
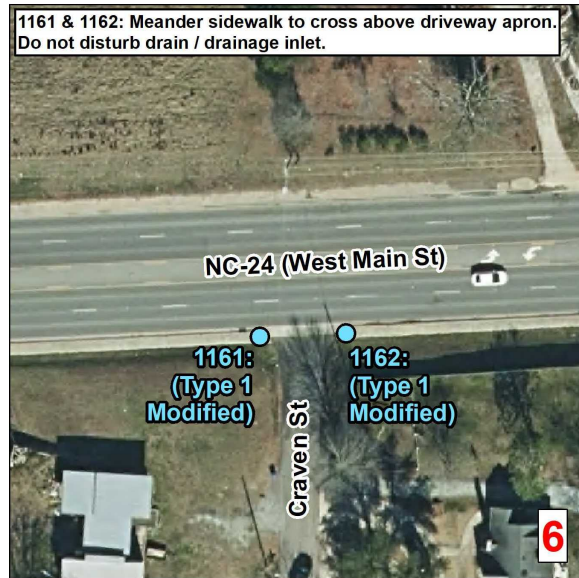
**Curb Ramps To Be Repaired**

- Retrofit
- Remove and Replace
- New Curb Ramp
- Remove Ramp
- Other
- Municipal Boundary
- Census Urban Areas (>5,000 Pop)
- NCHPO Historic Boundary (NR and LHD)

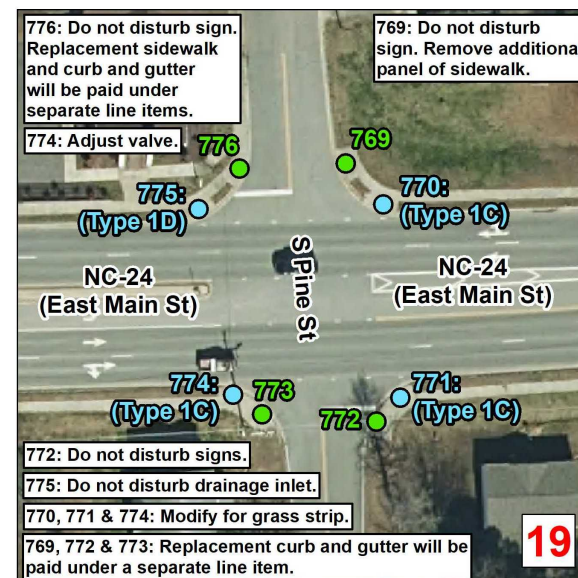
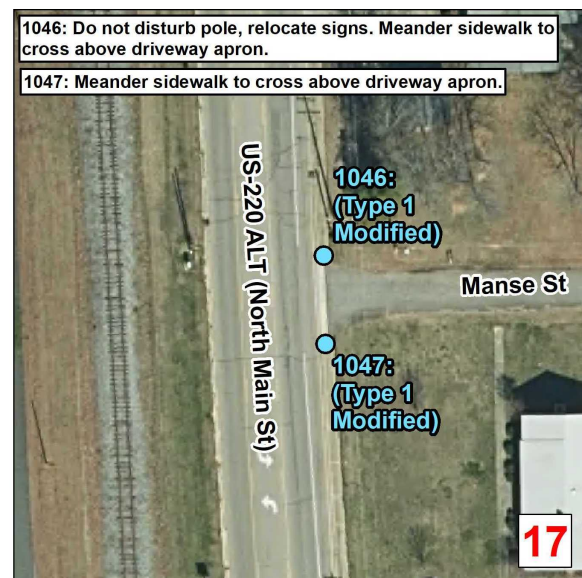
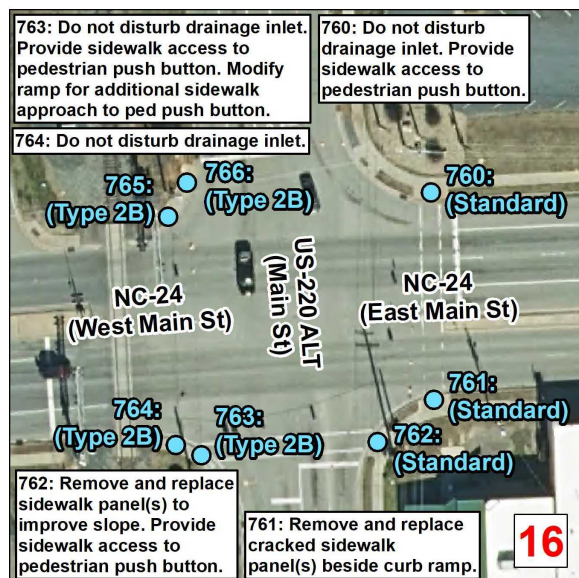
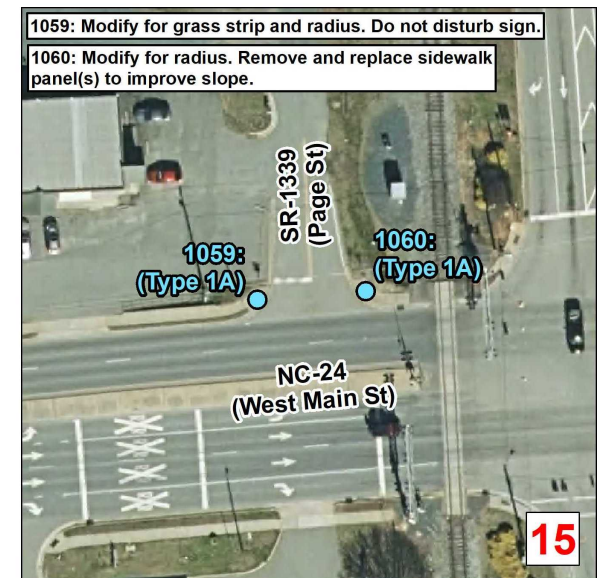
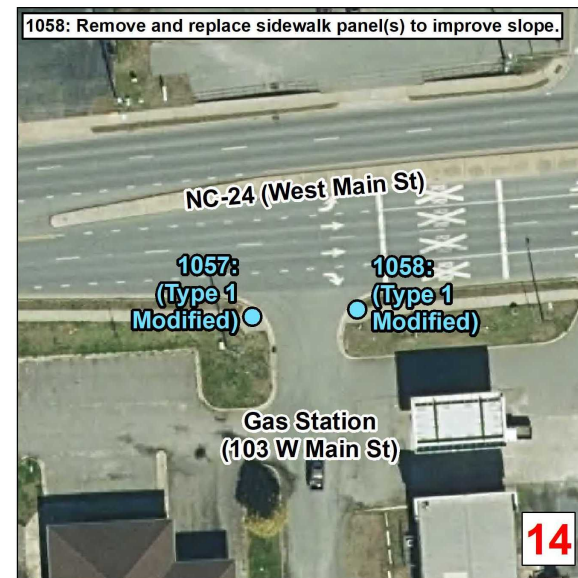
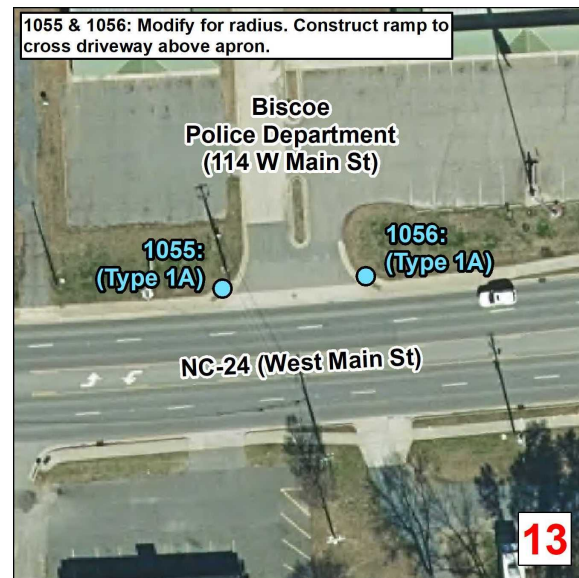
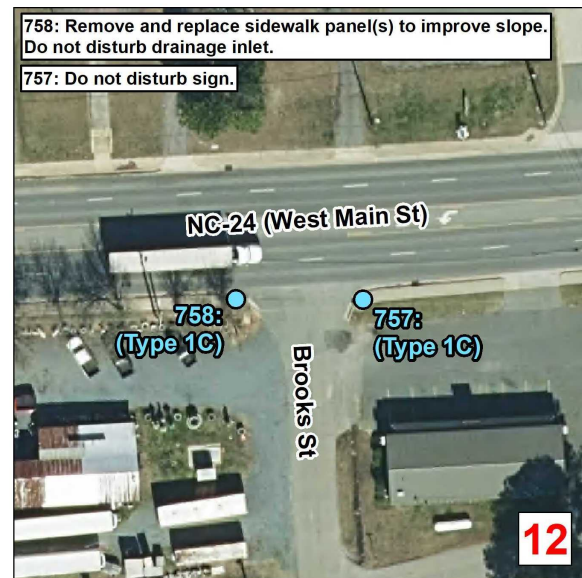
**Curb Ramps in Areas <5,000 Population**  
**Municipality: Biscoe**  
**TIP Number: BO-2408F**  
**PE WBS Number: 50937.1.2**  
**CON WBS Number: 50937.3.8**  
**County: Montgomery**

NORTH CAROLINA DEPARTMENT OF TRANSPORTATION  
DIVISION 8

Source: NV5 Engineers and Consultants Inc., ESRI, NC OneMap, NCDOT, NCHPO



Sheet No.  
8



**Curb Ramps To Be Repaired**

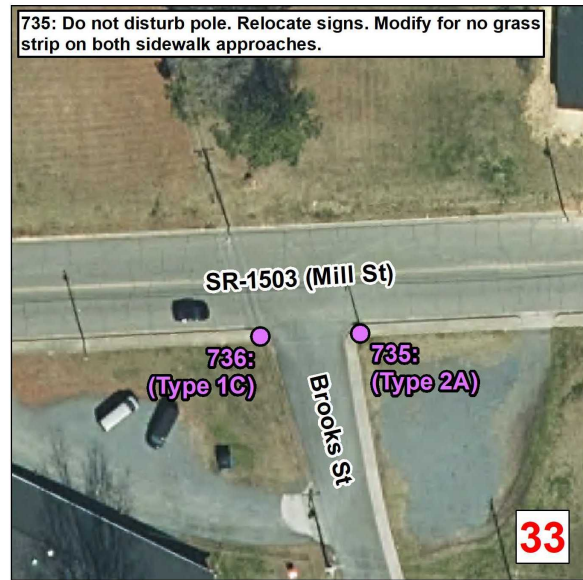
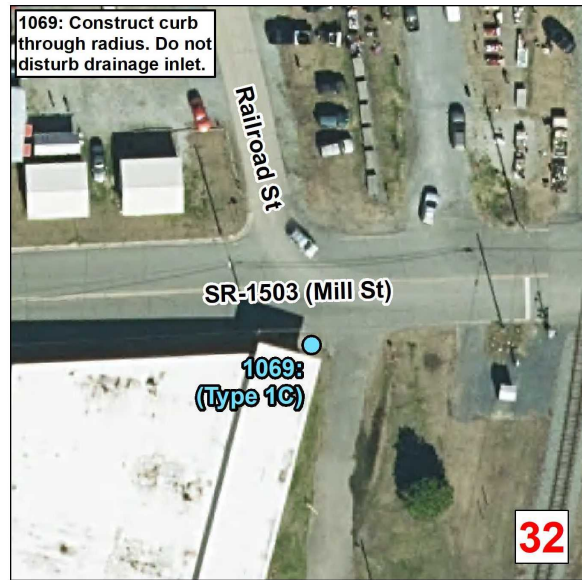
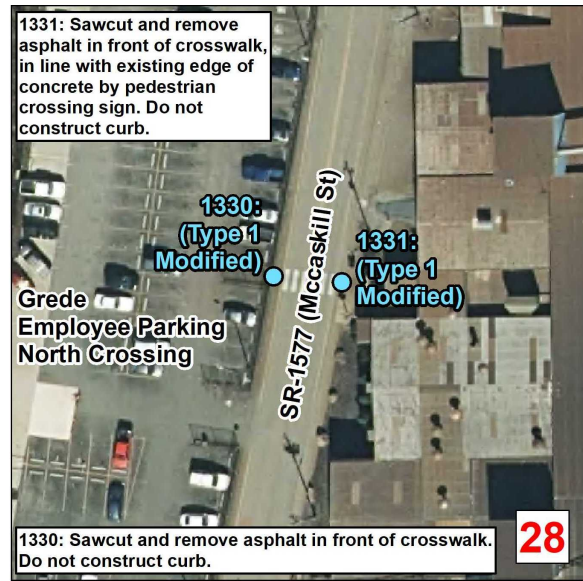
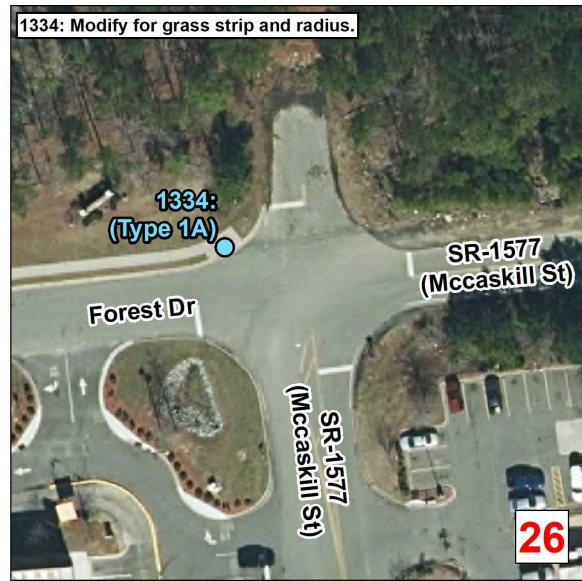
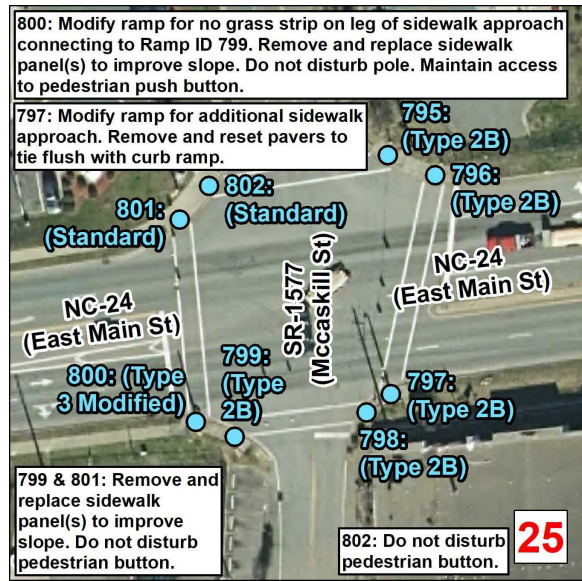
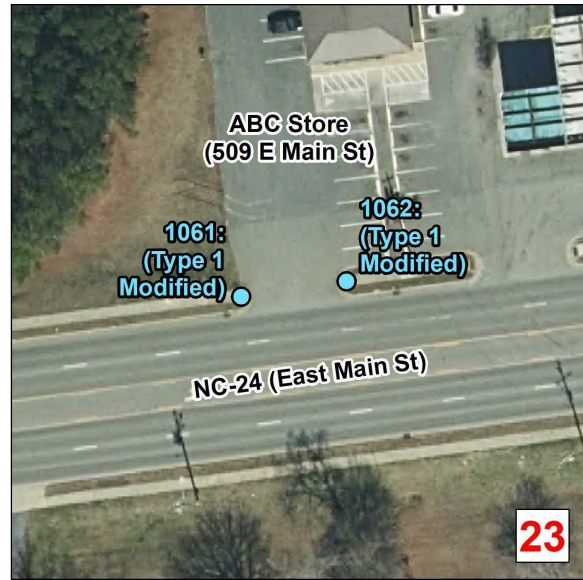
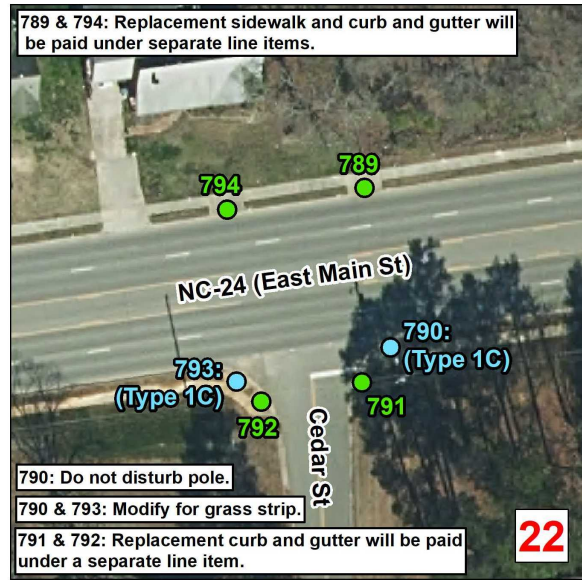
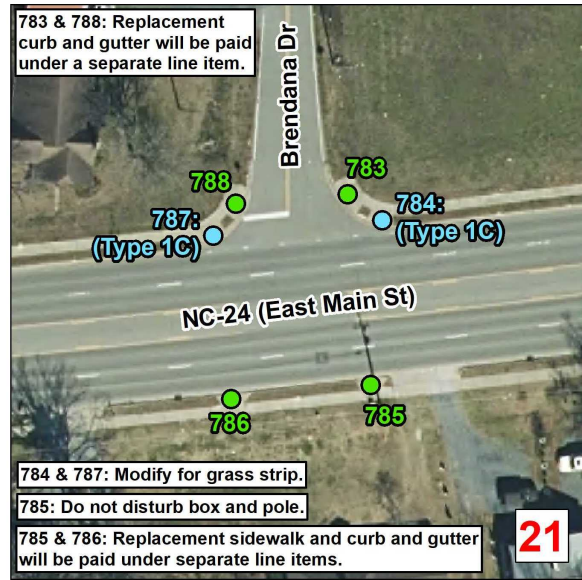
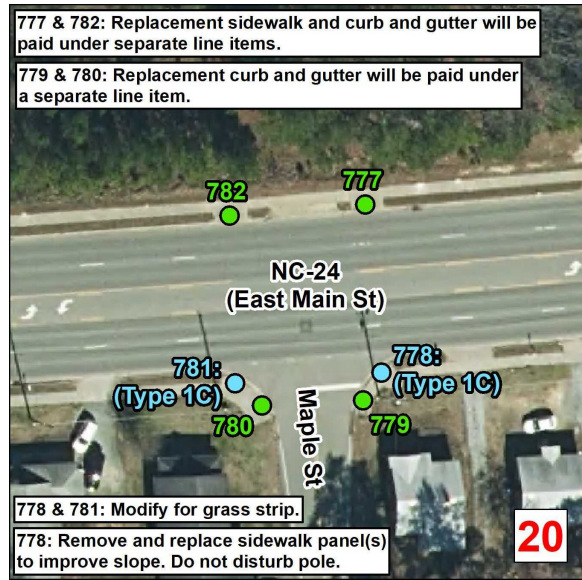
- Retrofit
- Remove and Replace
- New Curb Ramp
- Remove Ramp
- Other

Municipal Boundary  
 Census Urban Areas (>5,000 Pop)  
 NCHPO Historic Boundary (NR and LHD)

**Curb Ramps in Areas <5,000 Population**  
 Municipality: Biscoe  
 TIP Number: BO-2408F  
 PE WBS Number: 50937.1.2  
 CON WBS Number: 50937.3.8  
 County: Montgomery

NORTH CAROLINA DEPARTMENT OF TRANSPORTATION  
 DIVISION 8

Source: NV5 Engineers and Consultants Inc., ESRI, NC OneMap, NCDOT, NCHPO



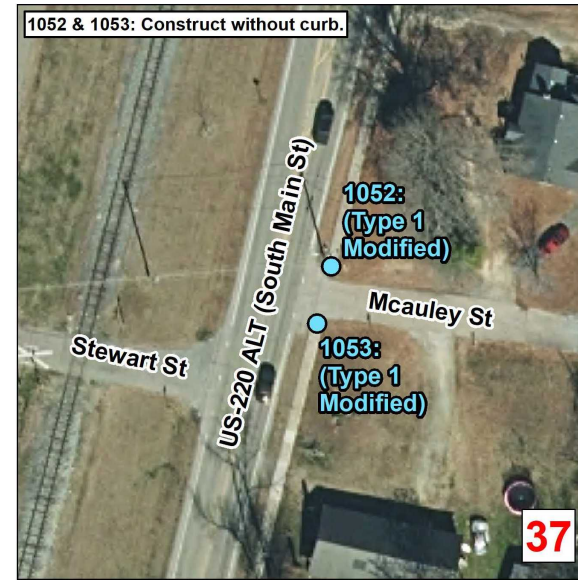
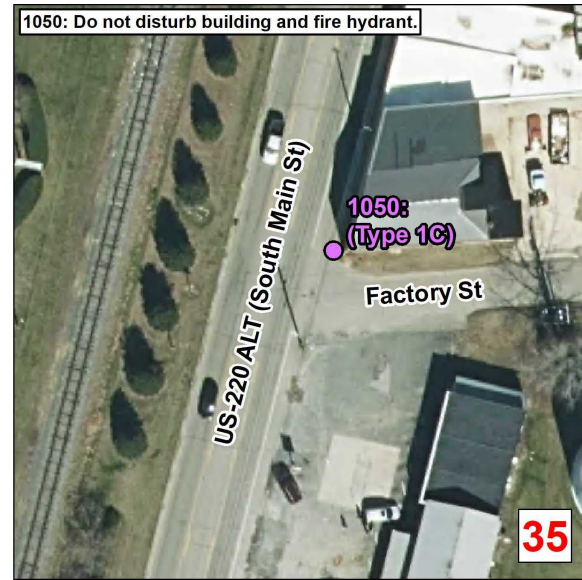
**Curb Ramps To Be Repaired**

- Retrofit
- Remove and Replace
- New Curb Ramp
- Remove Ramp
- Other
- Municipal Boundary
- Census Urban Areas (>5,000 Pop)
- NCHPO Historic Boundary (NR and LHD)

**Curb Ramps in Areas <5,000 Population**  
Municipality: Biscoe  
TIP Number: BO-2408F  
PE WBS Number: 50937.1.2  
CON WBS Number: 50937.3.8  
County: Montgomery

NORTH CAROLINA DEPARTMENT OF TRANSPORTATION  
DIVISION 8


Source: NV5 Engineers and Consultants Inc., ESRI, NC OneMap, NCDOT, NCHPO



**Curb Ramps To Be Repaired**

- Retrofit
- Remove and Replace
- New Curb Ramp
- Remove Ramp
- Other


Municipal Boundary  
 Census Urban Areas (>5,000 Pop)  
 NCHPO Historic Boundary (NR and LHD)



---

**Curb Ramps in Areas <5,000 Population**  
**Municipality: Biscoe**  
**TIP Number: BO-2408F**  
**PE WBS Number: 50937.1.2**  
**CON WBS Number: 50937.3.8**  
**County: Montgomery**

---

 NORTH CAROLINA DEPARTMENT OF TRANSPORTATION  
 DIVISION 8

Source: NV5 Engineers and Consultants Inc., ESRI, NC OneMap, NCDOT, NCHPO

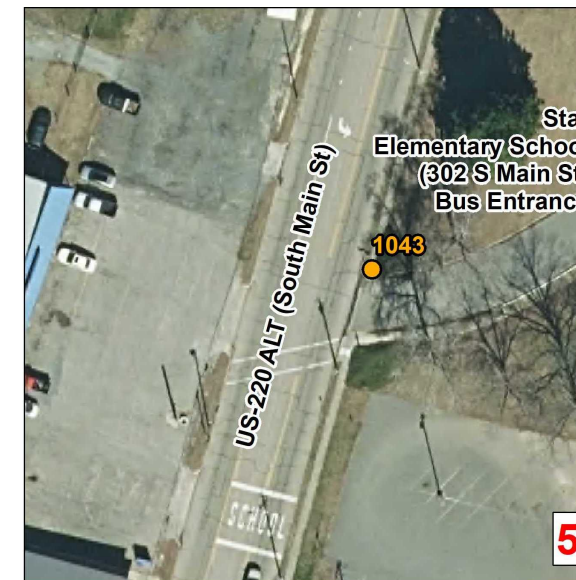
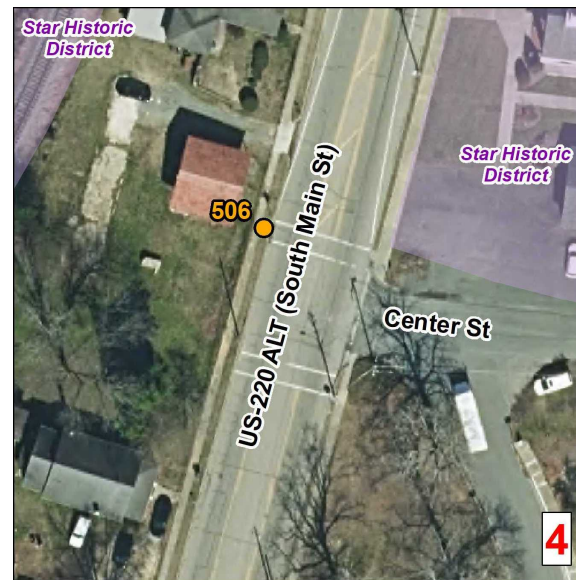
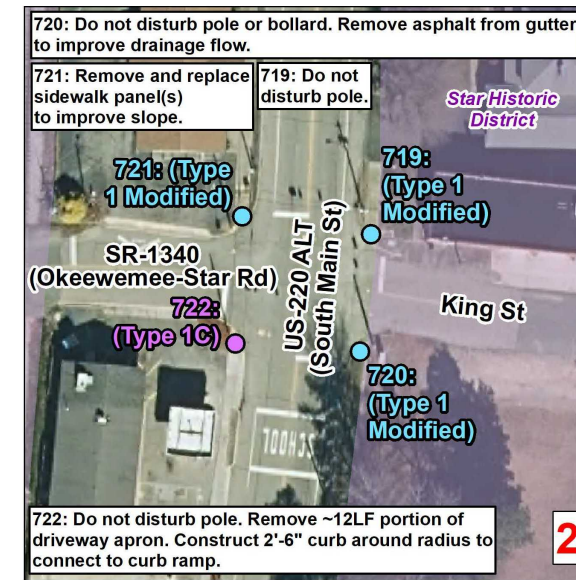
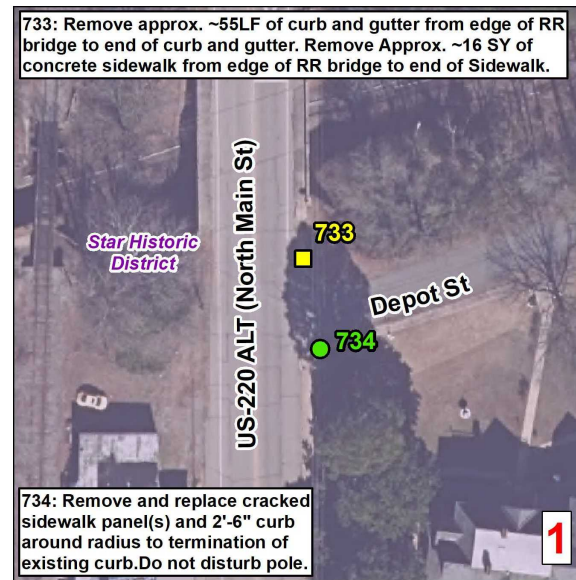
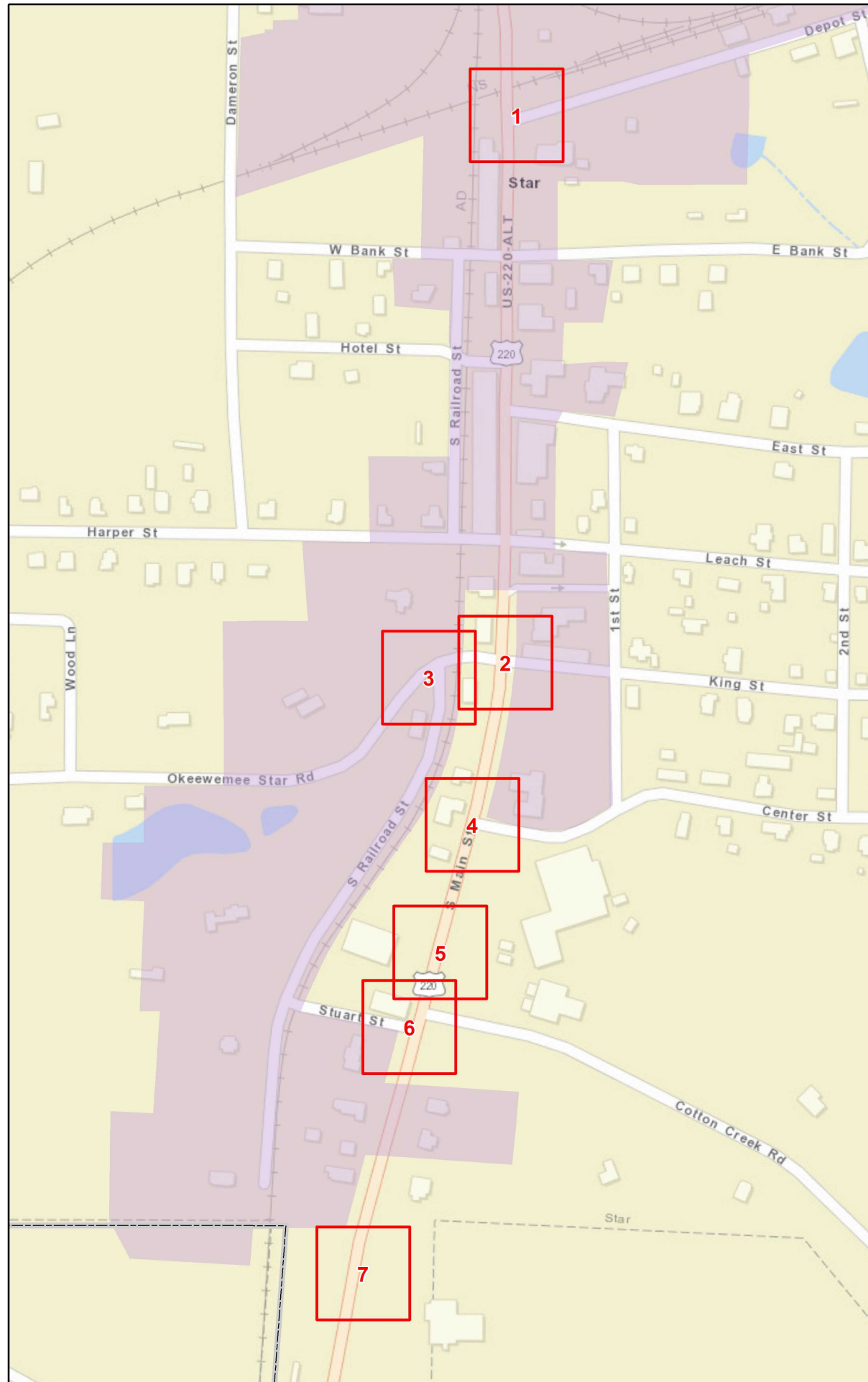
ADA SUMMARY OF QUANTITIES - STAR

Municipality:	Star
Project Number:	BO-2408F
PE WBS Number:	50937.1.2
Con WBS Number:	50937.3.8
County:	Montgomery

Sheet No.
11

Ramp ID	Inset Map Number	Route 1	Route 2	0156000000-E (SY) Removal of Existing Asphalt Pavement	2549000000-E (LF) 2'-6" Concrete Curb & Gutter	2752000000-E (LF) Remove And Replace 2'-6" Concrete Curb & Gutter	2752000000-E (LF) Remove 2'-6" Concrete Curb & Gutter	2591000000-E (SY) 4" Concrete Sidewalk	2738000000-E (SY) Remove And Replace 4" Concrete Sidewalk	2738000000-E (SY) Remove 4" Concrete Sidewalk	2738000000-E (SY) Remove and Reset Brick Pavers	2845000000-N (EA) Adjustment of Meter Boxes or Valve Boxes	4116100000-N (EA) Sign Erection, Relocate Type E (Ground Mounted)	2738000000-E (SY) Remove Driveway Apron	2612300000-N (EA) Retrofit Existing Concrete Curb Ramps	2612500000-N (EA) Remove and Replace Concrete Curb Ramps	2605000000-N (EA) Concrete Curb Ramps	2759000000-N (EA) Remove Concrete Curb Ramps	Improvement Type
733	1	US-220 ALT (North Main St)	Depot St				55		33	16									Other
734	1	US-220 ALT (North Main St)	Depot St			45												1	Remove Ramp
719	2	US-220 ALT (South Main St)	King St		5											1			Type 1 Modified - 848.06
720	2	US-220 ALT (South Main St)	King St	3	5											1			Type 1 Modified - 848.06
721	2	US-220 ALT (South Main St)	SR-1340 (Okeewemee-Star Rd)						3							1			Type 1 Modified - 848.06
722	2	US-220 ALT (South Main St)	SR-1340 (Okeewemee-Star Rd)		10		10			6				4			1		Type 1C - 848.06
1323	3	SR-1340 (Okeewemee-Star Rd)	South Railroad St												1				Retrofit Warnings - 848.06
506	4	US-220 ALT (South Main St)	Center St												1				Retrofit Warnings - 848.06
1043	5	US-220 ALT (South Main St)	Star Elementary School (302 S Main St) Bus Entrance												1				Retrofit Warnings - 848.06
502	6	US-220 ALT (South Main St)	Stewart St	6		12										1			Type 1 Modified - 848.06
503	6	US-220 ALT (South Main St)	Stewart St													1			Type 1 Modified - 848.06
1045	7	US-220 ALT (South Main St)	Star Town Hall (454 S Main St)		6				6							1			Type 1 Modified - 848.06
-	-	-	-	-	-	18*	-	-	-	-	-	-	-	-	-	-	-	-	
<b>Sub-Total for Star</b>				<b>9</b>	<b>21</b>	<b>80</b>	<b>65</b>	<b>0</b>	<b>42</b>	<b>22</b>	<b>0</b>	<b>0</b>	<b>0</b>	<b>4</b>	<b>3</b>	<b>6</b>	<b>1</b>	<b>1</b>	

Notes: (1) ADA quantity totals are provided on the project 'ADA SUMMARY OF QUANTITIES - TOTALS' page. (2) \*Contingency line item amount provided for adjustments outside of curb ramp pay limits.



Sheet No.  
12

**Curb Ramps To Be Repaired**

- Retrofit
- Remove and Replace
- New Curb Ramp
- Remove Ramp
- Other
- Municipal Boundary
- Census Urban Areas (>5,000 Pop)
- NCHPO Historic Boundary (NR and LHD)

**Curb Ramps in Areas <5,000 Population**  
**Municipality: Star**  
**TIP Number: BO-2408F**  
**PE WBS Number: 50937.1.2**  
**CON WBS Number: 50937.3.8**  
**County: Montgomery**

NORTH CAROLINA DEPARTMENT  
OF TRANSPORTATION  
DIVISION 8

Source: NV5 Engineers and Consultants Inc., ESRI, NC OneMap, NCDOT, NCHPO

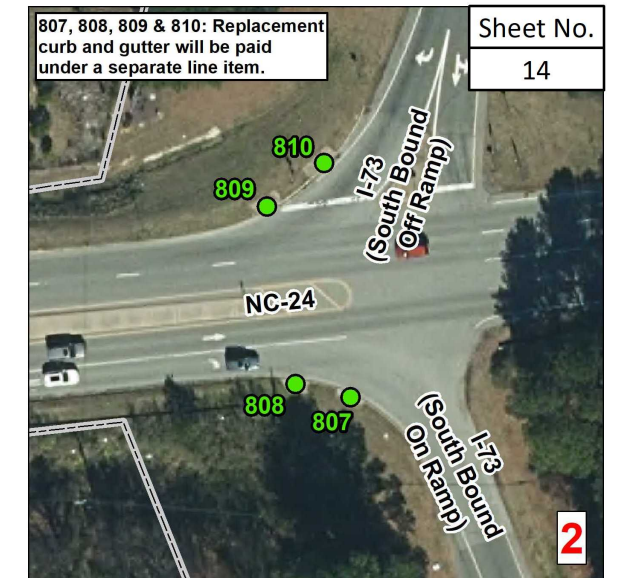
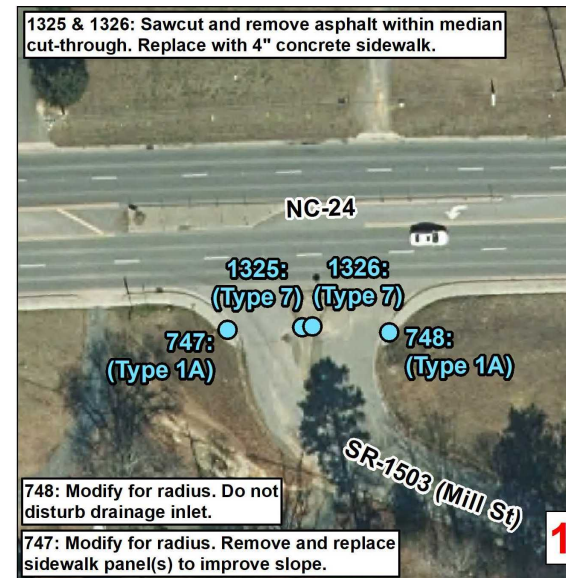
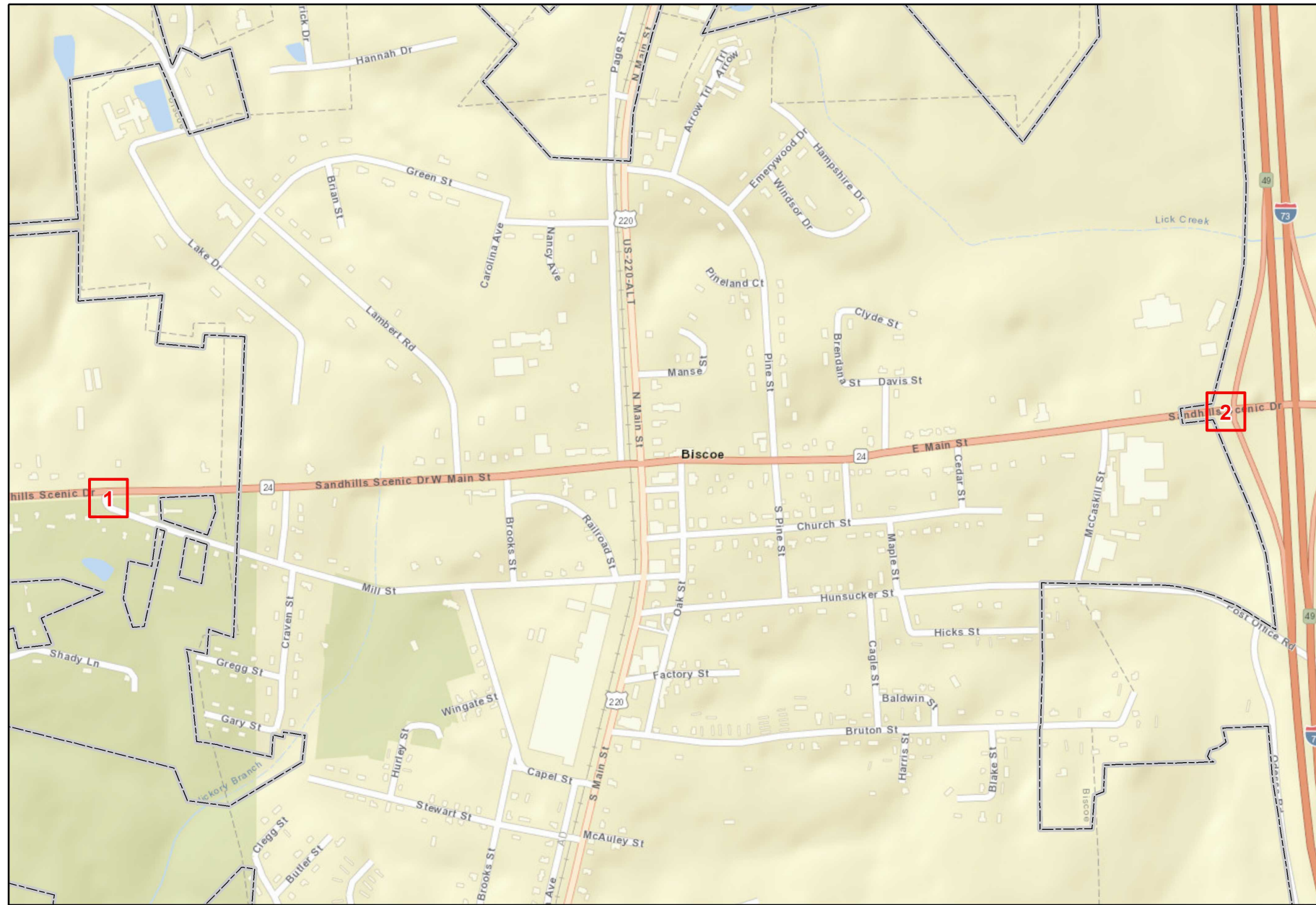
ADA SUMMARY OF QUANTITIES - UNINCORPORATED AREAS - MONTGOMERY COUNTY

Sheet No.
13

Municipality:	Unincorporated Areas
Project Number:	BO-2408F
PE WBS Number:	50937.1.2
Con WBS Number:	50937.3.8
County:	Montgomery

Ramp ID	Inset Map Number	Route 1	Route 2	0156000000-E (SY) Removal of Existing Asphalt Pavement	2549000000-E (LF) 2'-6" Concrete Curb & Gutter	2752000000-E (LF) Remove And Replace 2'-6" Concrete Curb & Gutter	2752000000-E (LF) Remove 2'-6" Concrete Curb & Gutter	2591000000-E (SY) 4" Concrete Sidewalk	2738000000-E (SY) Remove And Replace 4" Concrete Sidewalk	2738000000-E (SY) Remove 4" Concrete Sidewalk	2738000000-E (SY) Remove and Reset Brick Pavers	2845000000-N (EA) Adjustment of Meter Boxes or Valve Boxes	4116100000-N (EA) Sign Erection, Relocate Type E (Ground Mounted)	2738000000-E (SY) Remove Driveway Apron	2612300000-N (EA) Retrofit Existing Concrete Curb Ramps	2612500000-N (EA) Remove and Replace Concrete Curb Ramps	2605000000-N (EA) Concrete Curb Ramps	2759000000-N (EA) Remove Concrete Curb Ramps	Improvement Type
747	1	NC-24	SR-1503 (Mill St)			5			3							1			Type 1A - 848.06
748	1	NC-24	SR-1503 (Mill St)													1			Type 1A - 848.06
1325	1	NC-24	SR-1503 (Mill St)													1			Type 7 - 848.06
1326	1	NC-24	SR-1503 (Mill St)													1			Type 7 - 848.06
807	2	NC-24	I-73 (South Bound On Ramp)		15													1	Remove Ramp
808	2	NC-24	I-73 (South Bound On Ramp)		15													1	Remove Ramp
809	2	NC-24	I-73 (South Bound Off Ramp)		15													1	Remove Ramp
810	2	NC-24	I-73 (South Bound Off Ramp)		15													1	Remove Ramp
-	-	-	-	-	-	12*	-	-	-	-	-	-	-	-	-	-	-	-	
<b>Sub-Total for Unincorporated Areas - Montgomery County</b>				<b>0</b>	<b>60</b>	<b>17</b>	<b>0</b>	<b>0</b>	<b>3</b>	<b>0</b>	<b>0</b>	<b>0</b>	<b>0</b>	<b>0</b>	<b>0</b>	<b>4</b>	<b>0</b>	<b>4</b>	

Notes: (1) ADA quantity totals are provided on the project 'ADA SUMMARY OF QUANTITIES - TOTALS' page. (2) \*Contingency line item amount provided for adjustments outside of curb ramp pay limits.



**Curb Ramps To Be Repaired**

- Retrofit
- Remove and Replace
- New Curb Ramp
- Remove Ramp
- Other

Municipal Boundary  
 Census Urban Areas (>5,000 Pop)  
 NCHPO Historic Boundary (NR and LHD)

---

**Curb Ramps in Areas <5,000 Population**  
**Municipality: Unincorporated Areas**  
**TIP Number: BO-2408F**  
**PE WBS Number: 50937.1.2**  
**CON WBS Number: 50937.3.8**  
**County: Montgomery**

NORTH CAROLINA DEPARTMENT OF TRANSPORTATION  
DIVISION 8

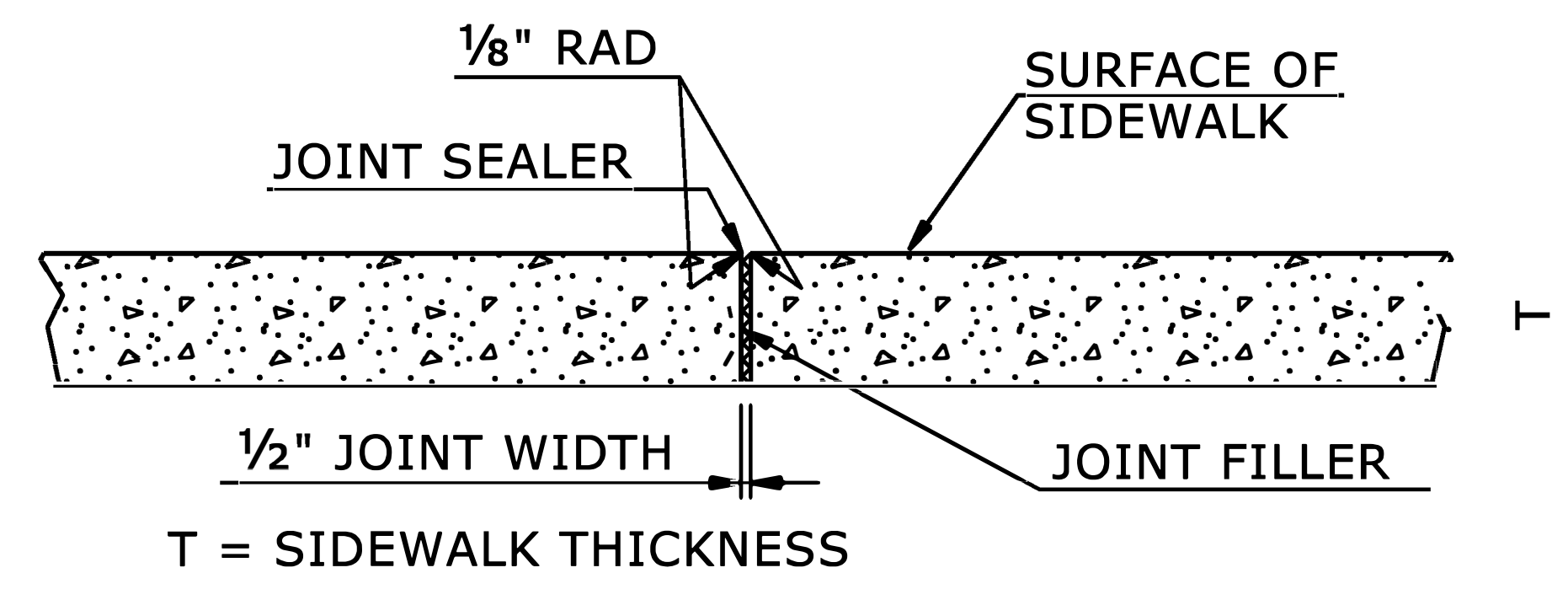
Source: NV5 Engineers and Consultants Inc., ESRI, NC OneMap, NCDOT, NCHPO

NOTES:

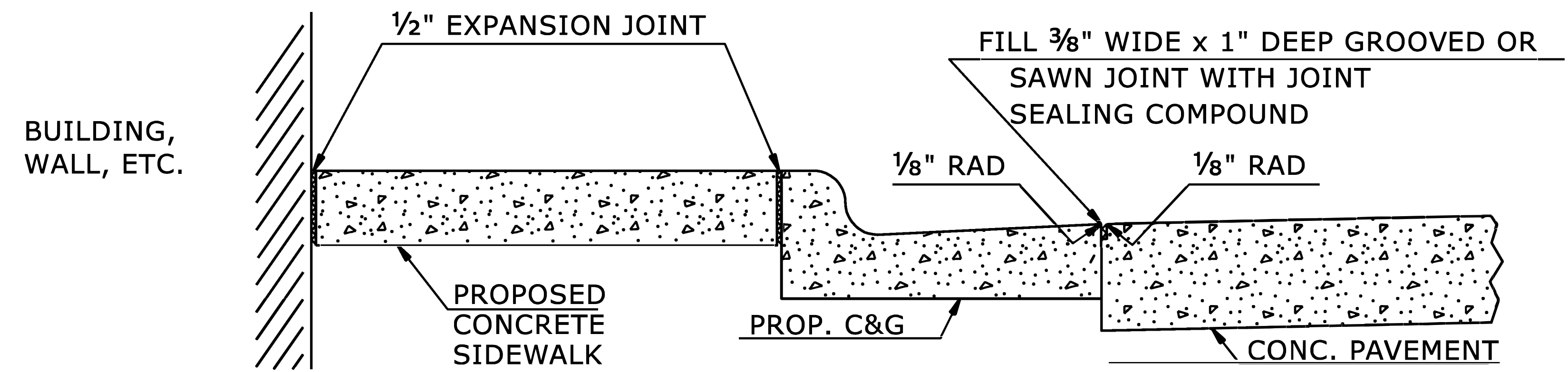
CONSTRUCT STANDARD SIDEWALK 5' WIDE AND 4" THICK UNLESS OTHERWISE DENOTED ON PLANS.

PLACE A GROOVE JOINT 1" DEEP WITH 1/8" RADII IN THE CONCRETE SIDEWALK AT 5' INTERVALS. ONE 1/2" EXPANSION JOINT WILL BE REQUIRED AT 50' INTERVALS. A 1/2" EXPANSION JOINT WILL BE REQUIRED WHERE THE SIDEWALK JOINS ANY RIGID STRUCTURE.

SEE STD. DWG. 848.06 FOR CURB RAMP LOCATION REQUIREMENTS AND CONSTRUCTION GUIDELINES.



**TRANSVERSE EXPANSION JOINT IN SIDEWALK**



**DETAILS SHOWING JOINTS IN CONCRETE SIDEWALK**

STATE OF  
NORTH CAROLINA  
DEPT. OF TRANSPORTATION  
DIVISION OF HIGHWAYS  
RALEIGH, N.C.

ROADWAY DETAIL DRAWING FOR  
**CONCRETE SIDEWALK**



Signed by:  
*Nicole M. Hackler*  
2/24/2023

SHEET 1 OF 1  
**848D01**

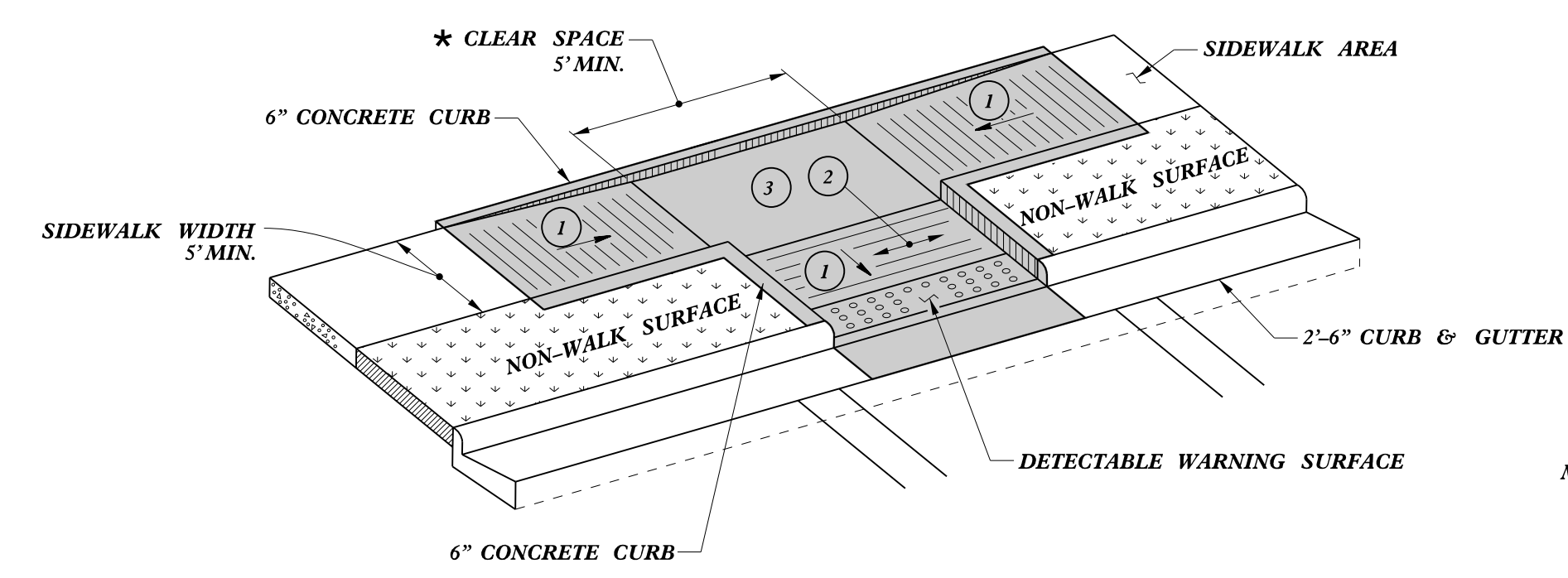
DOCUMENT NOT CONSIDERED FINAL  
UNLESS ALL SIGNATURES COMPLETED

**CONTRACTS STANDARDS  
AND DEVELOPMENT UNIT**  
Office 919-707-6950 FAX 919-250-4119

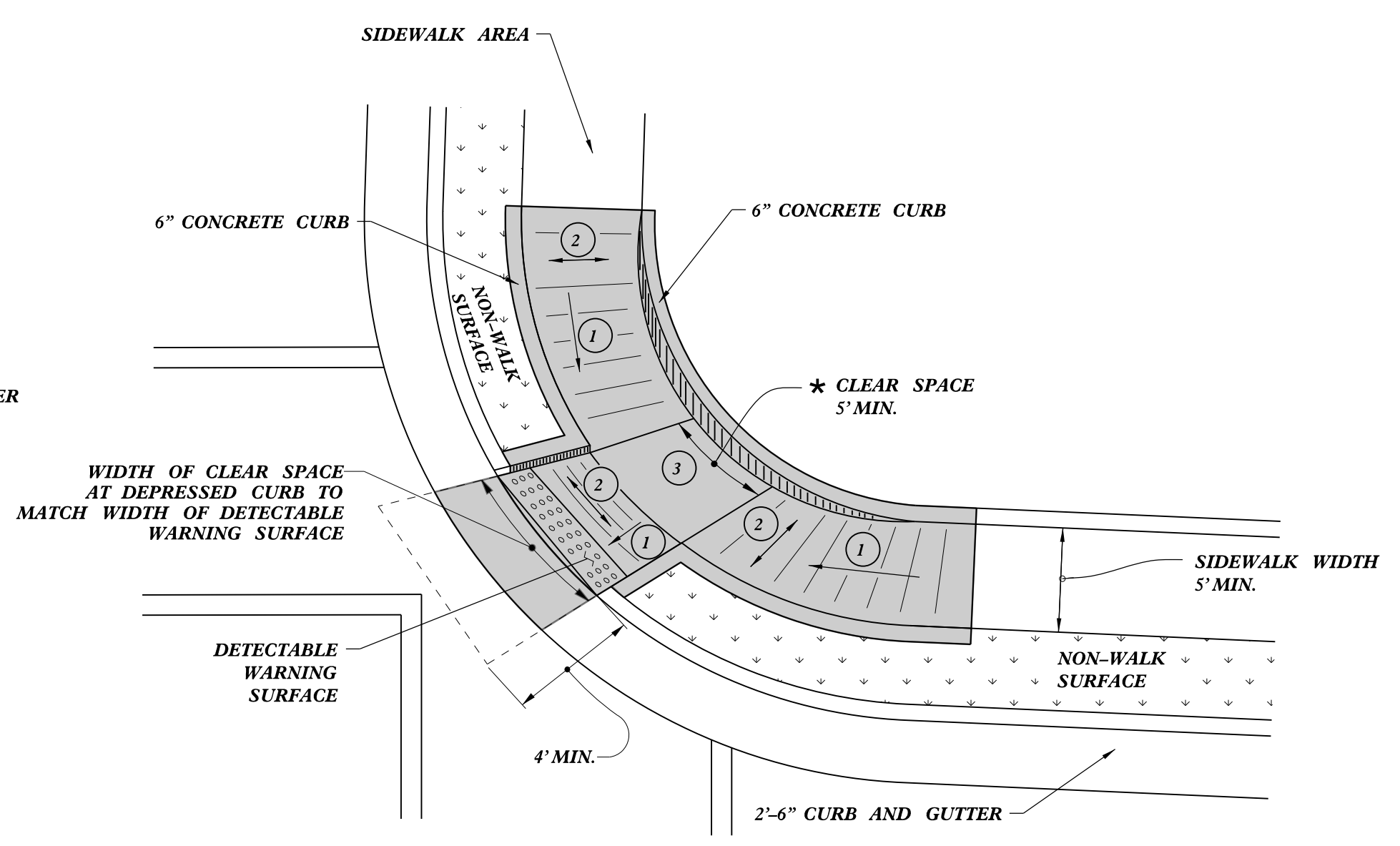
**SEE TITLE BLOCK**

ORIGINAL BY: S.CALHOUN	DATE: 7-25-2024
MODIFIED BY: _____	DATE: _____
CHECKED BY: _____	DATE: _____
FILE SPEC.: _____	

\* - WHERE CLEAR SPACE IS CONSTRAINED ON TWO OR MORE SIDES, THE CLEAR SPACE SHALL BE 4' MINIMUM X 5' MINIMUM, WITH 5' PROVIDED IN THE DIRECTION OF THE PEDESTRIAN STREET CROSSING.

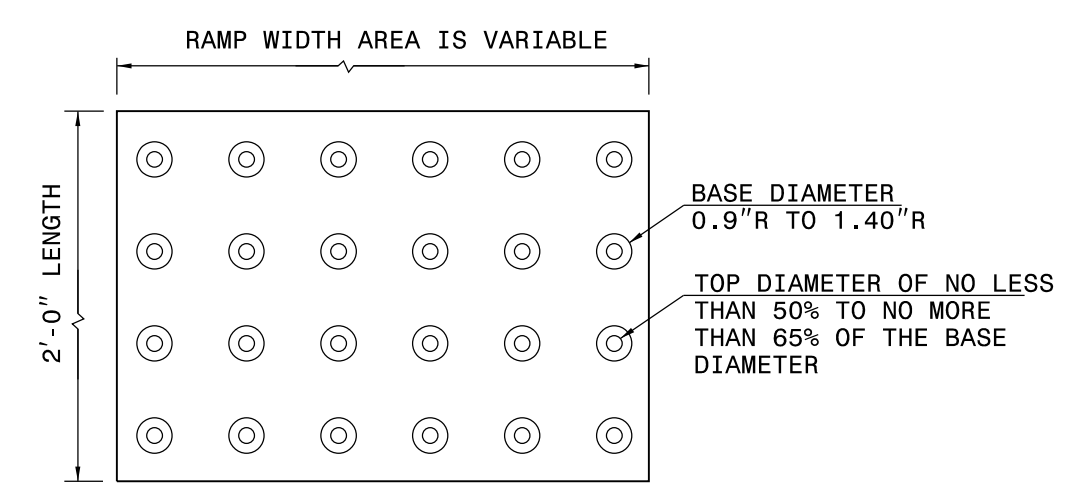


**TYPE 3**

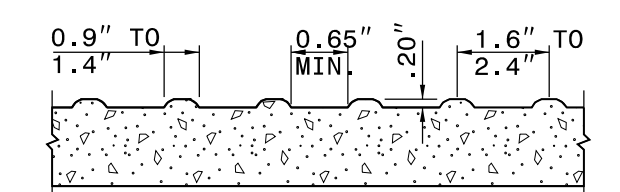


**TYPE 3 MODIFIED  
INSTALLATION IN A RADIUS**

NOTES:  
 1. DETECTABLE WARNING SURFACE SHALL COVER 2'-0" LENGTH AND FULL WIDTH OF THE RAMP FLOOR AS SHOWN ON THE DETAILS.  
 2. DETECTABLE WARNING SURFACE SHALL CONTRAST VISIBLY WITH ADJOINING SURFACE, EITHER LIGHT-ON-DARK, OR DARK-ON-LIGHT SEQUENCE COVERING THE ENTIRE RAMP.



**DETECTABLE WARNING SURFACE**



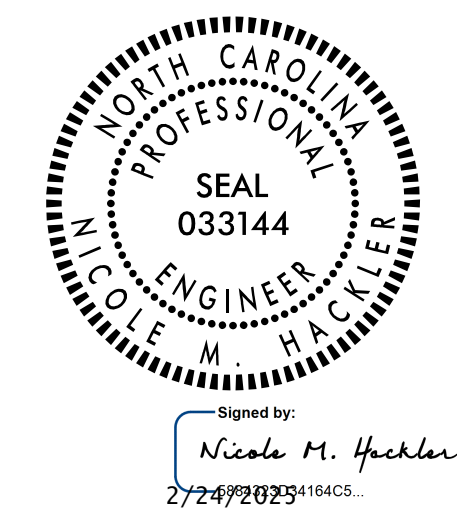
- 1 8.33% (12:1) MAX RAMP SLOPE
- 2 CROSS SLOPE: 2.00%
- 3 MAXIMUM CROSS SLOPE AND LONGITUDINAL SLOPE OF 2.00%

PAY LIMITS FOR 1 CURB RAMP

STATE OF  
 NORTH CAROLINA  
 DEPT. OF TRANSPORTATION  
 DIVISION OF HIGHWAYS  
 RALEIGH, N.C.

ROADWAY STANDARD DRAWING FOR  
**CURB RAMP**  
 PARALLEL RAMP

SHEET 9 OF 13  
**848D06**



DOCUMENT NOT CONSIDERED FINAL  
 UNLESS ALL SIGNATURES COMPLETED

**CONTRACTS STANDARDS  
 AND DEVELOPMENT UNIT**  
 Office 919-707-6950 FAX 919-250-4119

**SEE TITLE BLOCK**

ORIGINAL BY: S.CALHOUN DATE: 12-22-2023  
 MODIFIED BY: DATE:  
 CHECKED BY: DATE:  
 FILE SPEC.: special\_details\nmhackler\0609.dgn